

Macro Community Resource Centre

# Macro Building Management Ltd

Annual Report

2013

## Contents

### MACRO BUILDING MANAGEMENT LTD

### ANNUAL REPORT 2013

	Page
Contents	1
Chairperson Address	2
Development Manager's Address	3
Vision and Mission Statements	4
Company Details	5
Management and Staff	6 - 7
About the Macro Community Resource Centre	8
Project Profiles	9
Community and Voluntary Use	10
Accomplishments	11 - 17
Finance Report	18 - 19
Acknowledgements	20

## Chairperson Address

The Board of MACRO Building Management is responsible for the management of the MACRO Community Resource Centre and our aim is to manage the MACRO Community Resource Centre as an active and sustainable facility for the people who reside in the Markets area of Dublin 7.

One of our strengths is our ability to work together with the local community, Dublin City Council and our funders the Dept. Of Social Protection, Pobal and our staff to ensure the success for resident projects, the local community and all who come to us to avail of our service and activities.

The work of MACRO Building Management since 2001 has made practical contributions to people's lives, many people have been supported in the provision of information, childcare, drug recovery. Woman, Men, Senior Citizens and Children have all been supported in community activities, Employment & Training programmes and have assisted many in their search for employment. We aim to identify the needs of the local community and to address these needs on a continuous basis.

As chairperson I wish to ensure that the strategic plan and policies we implement and follow are in the best interests of our Resource Centre and the Markets Area Community.

I would like to thank the board of Macro Building Management for their voluntary work ensuring the sustainability of the Resource Centre , the Development Manager and the staff for their ongoing dedicated work and all who avail of the services The Macro Community Resource Centre provides.

Neil Dwane  
Chairperson

## Development Manager's Address

Macro Building Management believes everyone in the Markets Community has the right to avail of an enriched quality of life and a chance to improve themselves within their local community, with this aim in mind we have striven to engage with the community to meet their needs with an open and accommodating mind. Our obligation to the local community is to continuously look at what we do to see if it can be improved.

2013 was a year of forward progression which has permitted us to continue on our path of aiming to improve the quantity of life for the markets community.

This year we have increased our community activities by 50% integrating Senior Citizens activities into our programme, our summer activities for children were a significant success and we are hopeful that next year we will be able to develop further community activities with the resources from the Macro Charity Shop.

Our Charity Shop has gone from strength to strength providing us with an income for community use. In 2013 we were in the position to share this resource with our community projects who reside in the Macro Community Resource Centre. It is anticipated in 2014 we will have a greater nest egg to share. I would like to thank all who have donated goods to our charity shop as without their donation the community activities and the shared funding to community projects would not have transpired.

In 2013 we saw the continued implementation of our Strategic Plan (2012 - 2015). And I am pleased to report we are currently at 100% occupancy along with a 50% increase in community activities for children and senior citizens.

The commitment and dedication of the board has enabled us to continue to commit to our strategic plan and our betterment is due to their continued voluntary involvement and direction, for that I would like to offer my appreciation.

I acknowledge our funders in the public sector Dublin City Council for our maintenance and staffing grant and the Department of Social Protection (Pobal) for the staffing grant both have continued to support the Macro Community Resource Centre and on behalf of the local community we thank them

I would especially like to thank all our staff and volunteers who work so diligently with a conscientious attitude to make the Macro Community Resource Centre a success and with their help and the local community participation we look forward to a positive and active 2014.

Brenda Murphy  
Development Manager

# OUR VISION AND MISSION

## Vision

***TO BE THE BEST RESOURCE CENTRE IN THE COUNTRY TO PROVIDE SUPPORT SERVICES  
AND ASSISTANCE WITH NO BARRIERS***

***TO EMPOWER OUR COMMUNITY***



## Mission

***MACRO BUILDING MANAGEMENT'S MISSION IS TO WORK WITH COMMUNITY AND  
VOLUNTARY ORGANISATIONS TO PROVIDE THE COMMUNITY OF  
THE MARKETS AREA WITH SUSTAINABLE IMPROVEMENTS IN THE QUALITY OF THEIR LIFE  
THROUGH THE PROVISION OF COMMUNITY SERVICES***





## Contact Information

Name:	MACRO Building Management Ltd
Address:	MACRO Community Resource Centre 1 Green Street Dublin 7
Tel:	01 8737000 / 01 8737009
Fax:	01 8737091
E-mail:	<a href="mailto:info@macrobuilding.ie">info@macrobuilding.ie</a>
Legal Status:	In November 2001 MACRO Building Management became An incorporated company limited by guarantee.
Company Registration Number	350055
Charitable Status	In August 2002 the company was granted Charitable Status
CHY Number	14885
Auditors	Howlin O'Rourke & Co Unit 4 The Seapoint Buildings Clontarf Dublin 4
Bankers	Allied Irish Banks Capel Street Dublin 1

# MACRO BUILDING MANAGEMENT LTD

## DIRECTORS



Patrick Delaney



Elizabeth Kavanagh  
Treasurer



May Burke  
Company Secretary



Paul Bedford



Joan McConvey



Neil Dwane  
Chairperson



Stephen O Sullivan  
Vice Chairperson



Deirdre Casey

## ADVISORS

Fergus Synnott (Dublin City Council)

Marion Finglas (Dublin City Council)

## DEVELOPMENT MANAGER

Brenda Murphy



## WORKING GROUPS

### Human Resources

Patrick Delaney  
Deirdre Casey  
Patricia Trumble  
Brenda Murphy



Brenda Murphy  
Development Manager

### Finance

May Burke  
Patrick Delaney  
Brenda Murphy  
Patricia Trumble



Patricia Trumble  
Assistant Manager

### Health and Safety

May Burke  
Brenda Murphy  
Patricia Trumble

Anne Mackey  
& Mary Hynes



Carol Rollo



Caroline Kenny &  
Mary Curran(RIP)



David Crowley  
Jason Kearns  
Carol Dodrill



Christopher Bardon &  
Denise Towell

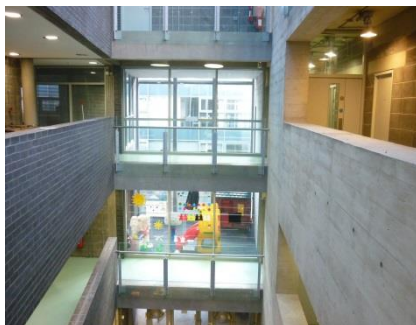


## ABOUT THE MACRO COMMUNITY RESOURCE CENTRE

THE MACRO COMMUNITY RESOURCE CENTRE IN GREEN STREET WAS OPENED IN NOVEMBER 2001. IT WAS BUILT BY DUBLIN CITY COUNCIL FOR THE PEOPLE OF THE MARKETS AREA OF DUBLIN AND FOR THE USE BY THE WIDER COMMUNITY AND VOLUNTARY SECTOR. THE RESOURCE CENTRE SERVES BY THE PEOPLE WHO RESIDE WITHIN THE BOUNDARIES OF CAPEL STREET, HENRIETTA STREET, CONSTITUTION HILL, QUEEN STREET, SMITHFIELD GREEK STREET AND THE CITY QUAYS.



THE MACRO COMMUNITY RESOURCE CENTRE IS A NON - PROFIT MAKING COMMUNITY RESOURCE WHICH PROVIDES OFFICE ACCOMMODATION AND ACTIVITY SPACE TO COMMUNITY AND VOLUNTARY ORGANISATIONS OFFERING AN EXCELLENT ENVIRONMENT FROM WHICH A NUMBER OF SERVICE PROVIDERS IN THE AREAS OF YOUTH, DISABILITY, CHILDCARE, DRUG RECOVERY, EDUCATION, SENIOR CITIZENS, COMMUNITY UP SKILLING AND INFORMATION PROVISION WORK TOGETHER.



THE RESOURCE CENTRE WAS DESIGNED BY DEREK TYNAN ARCHITECTS WITH INPUT FROM LOCAL COMMUNITY GROUPS AND LOCAL RESIDENTS GROUPS. THE 4 STORY BUILDING WITH ITS UNIQUE SHAPED ROOMS, UNIQUE BLOCK WORK AND GLASS ATRIUM PROVIDE A STRIKING BUILDING WHICH HOUSES THE 10 COMMUNITY AND VOLUNTARY RESIDENT PROJECTS INCLUDING A COMMUNITY CRÈCHE AND A SENIOR CITIZENS SERVICE.

THE MACRO COMMUNITY RESOURCE CENTRE PROVIDES THE MARKET'S AREA IN GENERAL WITH AN INTEGRATED FOCUS FOR COMMUNITY SERVICES AND FACILITIES. IT IS THE HOME FOR A VARIETY OF ORGANISATIONS THEIR STAFF AND CLIENTS OFFERING A SAFE, SECURE AND DISABLE FRIENDLY ENVIRONMENT TO MEET THE NEEDS OF THE COMMUNITY.



ADDITIONAL SERVICES PROVIDED TO THE GENERAL PUBLIC AND RESIDENTIAL PROJECTS INCLUDE SUPPORT STAFF, ADMINISTRATION, PAYROLL, CLEANING, MAINTENANCE, PHOTOCOPYING, FAXING, WORD-PROCESSING, EQUIPMENT HIRE FOR MEETINGS SECURITY AND MAINTENANCE OF COMMON AREAS OF THE RESOURCE CENTRE. POSTAL SERVICE EXHIBITION SPACE AND COMMUNITY NOTICE BOARDS THE RESOURCE CENTRE WAS OPENED TO PROVIDE THE LOCAL COMMUNITY WITH THE OPPORTUNITY TO IMPROVE THE QUALITY OF THEIR LIFE THROUGH THE PROVISION OF LOCAL EMPLOYMENT AND TO MEET GROWING SOCIAL,

DEVELOPMENT AND EDUCATIONAL NEEDS OF INDIVIDUALS, FAMILIES AND THE COMMUNITY & VOLUNTARY SECTOR.

### RESIDENTIAL SERVICES AT THE MACRO COMMUNITY RESOURCE CENTRE

Name of Group	Service provided	Current status
Pitter Patter Crèche	A community Crèche providing affordable childcare for 32 children, 16 per morning and afternoon sessions	Commenced Nov 2002
North West Inner City Training Development	A training and development project for stabilised drug users	Commenced June 2002
North West Citizens Information Service	Providing a free and confidential information and advice service on a wide range of services and entitlements to the wider community.	Commenced May 2003
George's Hill Community Employment.	A Community Employment project providing childcare and administration staff to local community projects	Commenced April 2002
Macro Senior Citizens	A drop in service providing social activities for senior citizens (Yoga, art, dancing, outings, bingo and crafts) plus home visits for elderly living alone.	Commenced April 2002
Snug Counselling Service	A community based counselling service for families and recovering drug users affected by addictions (drugs alcohol gambling and eating disorders)	Commenced April 2002
Irish Penal Reform Trust	A non-governmental organisation and registered charity which works to advance the rights of all persons in the penal system and towards the goal that imprisonment should be a sanction of the last resort	Commenced Nov 2013
Irish Environmental Network	Represents to government the capacity building and funding needs of its member organisations, all of whom are involved in one way or another in the well-being, protection and enhancement of the environment.	Commenced Sept 2010
European Consumer Centre	Offers advice on consumer rights when buying goods or services in another European country (including online). This service is free and confidential	Commenced Dec 2010
National Advocacy	The National Advocacy Service for People with Disabilities (NAS) provides independent,	Commenced April 2011

Service	representative advocacy services for vulnerable people with disabilities.	
---------	---	--

## RESOURCE CENTRE USAGE BY COMMUNITY AND VOLUNTARY GROUPS

We welcomed all the following community groups who have availed of our facilities during 2013

Belong to Youth Services

Bord na Mona

Canteen Ireland

Care Alliance of Ireland

Centre for Independent Living

Macro Christmas Crèche Party

CIS O'Connell Street

Collective Action Productions

Corner Ladies Club

Dublin Childcare Committee

Environmental Economics

European Ass Of Trauma Tech

Feasta

Greater Dublin Independent Living

Irish Penal Reform Trust

Jobseekers Information Day

Labour Party Clinics

Lesbian Gay Bisexual Transgender

Music Matters Choir

National Advocacy Service (Clondalkin)

Heery Film Auditions

Phibsborough Boxing Club

Place and Space Research Group

DCC Beta Project (Code for Dublin)

Social Enterprise (L McCabe)

St Michaels House Drama

Macro Summer Project

The Civic Works (Art)

Work Options Drama

Writers Group

Bootcamp Keep Fit Class

Business in the Community

Capel Court Residents Ass

Carers Association Awareness Day

Certas Law

Macro Senior Citizens Parties

CIS Clondalkin

Community Gardens Arran St East

Easter Drama Camp

Dublin Cross Culture

Environmental Law

Fathium Omar Birthday

Armstrong Film Weekend

Health Information Quality Authority

Italian Class

Korean Films

Labour Youth

Macro Men's Group

National Gay & Lesbian Federation

Neurological Alliance of Ireland

Outhouse

Piphees Park Jervis St. Residents Ass

Salvation Army

Smashing Times Theatre

Spanish Class

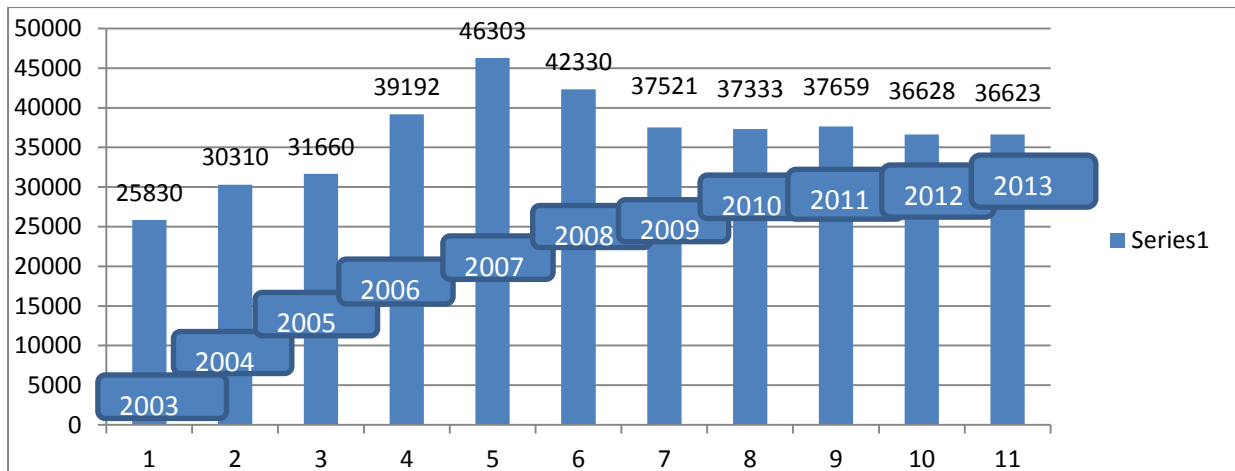
Student Drama Workshops

Transform Counselling

TUS Training

Career Development Workshop

***Macro Community Resource Centre Growth 2013***

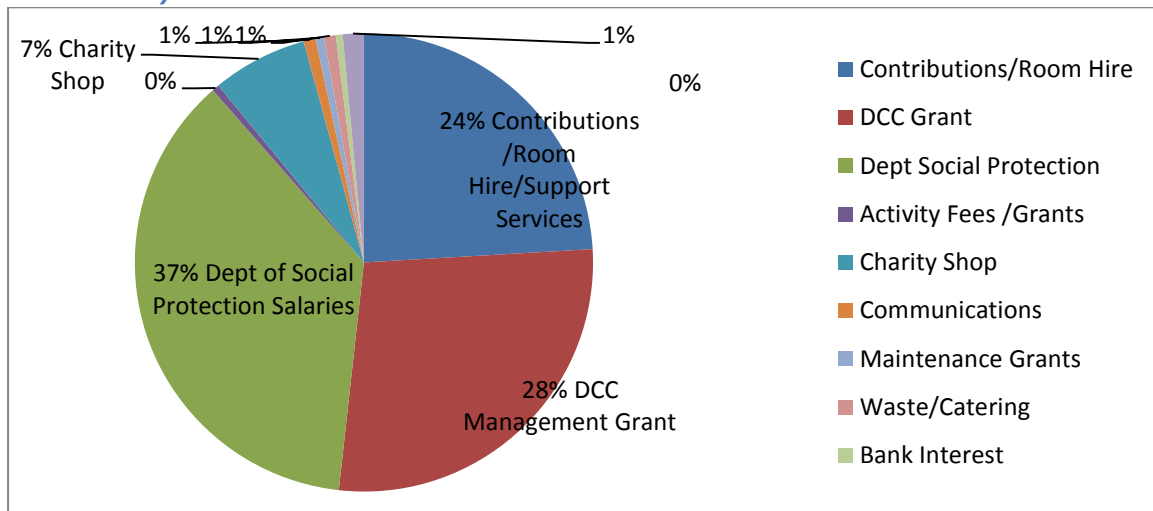


## ACCOMPLISHMENTS 2013

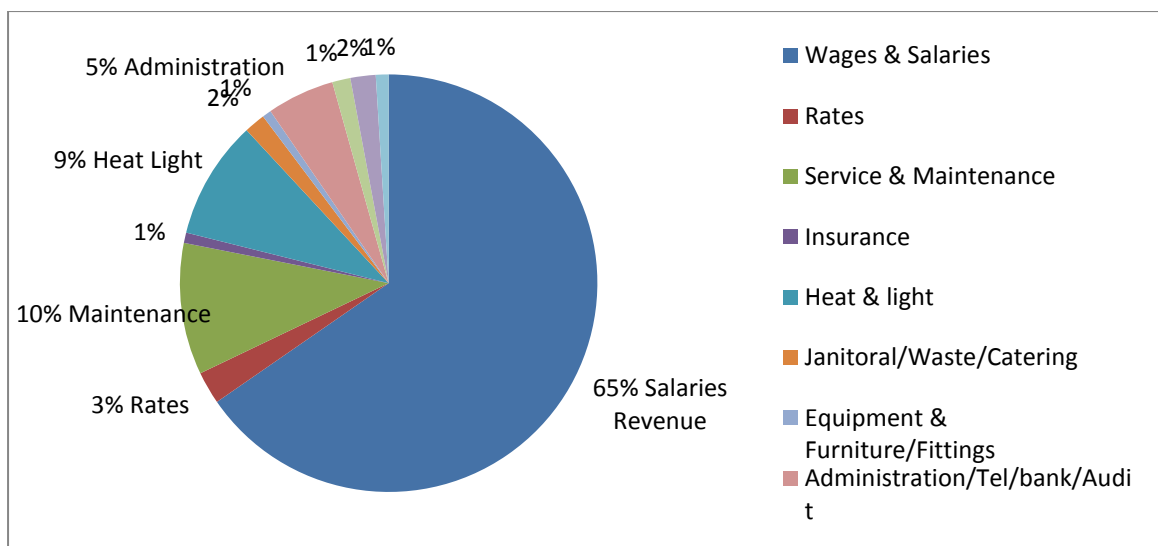
### Income

The Resource Centre's income is derived from three main sources the Department of Social Protection staffing grant administered by Pobal, Dublin City Council maintenance and staffing grant and our own generated income which comes from project contributions, room hire and support services plus the Macro Charity Shop.

#### Income Analysis 2013



#### Expenditure Analysis 2013



## Board Matters

The board of Macro Building Management consists of eight members and a panel of four to six advisors all drawn from the local community, the community and voluntary sector, the legal profession or the business community. The board has met nine times during the year plus two directors meetings and one Human Resources and one Finance meeting. The Annual General Meeting was held in May.

Early in the year the board reviewed Its Code of Conduct, Board Duties and the Conflict of Interest Policy. The Board operates to the best practice corporate governance principles both in its activities and in its use of committees, Board members register their interest in other undertakings.

From Dublin City Council we were sorry to lose Mary McInerney as our advisor and we welcomed the appointment of Fergus Synnott. –Under our current board the management Agreement for the Community resource centre and the License Agreement for the Charity shop were renewed, The Staffing contract with the Department of Social Protection administered through Pobal was renewed for one year allowing the continued employment of our Community Services Programme staff

## Statutory Notes

Safety and Health and Welfare at work Act 1989: in accordance with the above act Macro Building Management implements appropriate measures to protect the safety health and welfare of all employees and visitors to the Resource Centre.

Customer Service: Macro Building Managements policy set out its commitment to a high quality service includes a procedure for dealing with complaints.

Complaint Equality Act 2004: Macro Building Management supports the principle of equal opportunities in employment it opposes all forms of discrimination on the grounds of colour, race nationality, sexual orientation, ethic religion, gender, marital status or disability. Macro Building Management commitment to implement equal opportunities is reflected in its policies and practices procedures. Its objective is to ensure that all staff and visitors are treated equally

Prompt Payment of Accounts: It is the policy of Macro Building Management to ensure that all invoices are paid promptly specific procedures are in place to enable it to track all invoices and to ensure that all payments are made by their due dates. Invoices are registered daily and electronic payments are issued as required to ensure timely payments.

## Policy Reviews

Safeguarding Children and Vulnerable Adults

This policy aim is to provide policy and procedures to Macro Building Management and staff and volunteers of their responsibilities when working with children, vulnerable adults and young people. The policy is in addition to our Child Protection Policy 2009

#### Conflict of Interest Policy

The policy purpose is to protect both the Macro Community Resource Centre and its board members from any appearance of impropriety

## **Licenses**

The Licenses issued for space in the Resource Centre are issued by Dublin City Council on an annual basis.

## **Maintenance**

In the management of the facility the role of Macro Building Management is to ensure corporate and regulatory compliance plus the proper operation of all aspects of the Resource Centre to create an optimal, safe and cost effective environment for the occupants to function in. This is accomplished by managing the following activities:

Health and Safety	To control and manage all safety issues to prevent injury loss of business prosecution and insurance claims
Fire Safety	To maintain, inspect and test all fire safety equipment and systems, retaining records and inspection certificates
Security	To ensure the protection of employees and the Resource Centre
Maintenance	To ensure testing and inspection schedules are carried out to ensure safe operation of equipment
Cleaning	To maintain a safe and clean environment for all
Operational	Day to day running of the Resource Centre

Our maintenance mission is to ensure the Resource Centre is a clean and safe environment for all users. To achieve this we engage a number of companies plus our own staff to provide services and maintain the Centre, all electrical, mechanical units and water works are serviced bi-annually to ensure we have reliable operating systems. Service contracts are in place for fire systems, alarms, doors, lifts, windows.

## **Employment, Work Experience and Training**

#### Community Services Programme

The Community Service Programme assists in supporting social inclusive and economic development within the community. The programme is funded by the Dept. of Social Protection and provides part funding for the provision of four full time and six part time positions. 90% of staff employed under the Community Service Programme are employed from the Markets Area and Dublin 7 or 1 with 10% coming from the wider Dublin area.

#### The Tus Work Programme

The Tús initiative is a community work placement scheme providing short-term working opportunities for unemployed people. All the work carried out by participants in the Tús programme benefits the community. The Macro Community Resource Center has been appreciative of the 4 Tus staff that have assisted with the Charity shop, maintenance and administration.

#### Training/Courses

During the year numerous classes were held in Spanish, Yoga, Manual Handling, First Aid Childcare and Italian

## Projects

### User Groups and Individual Callers

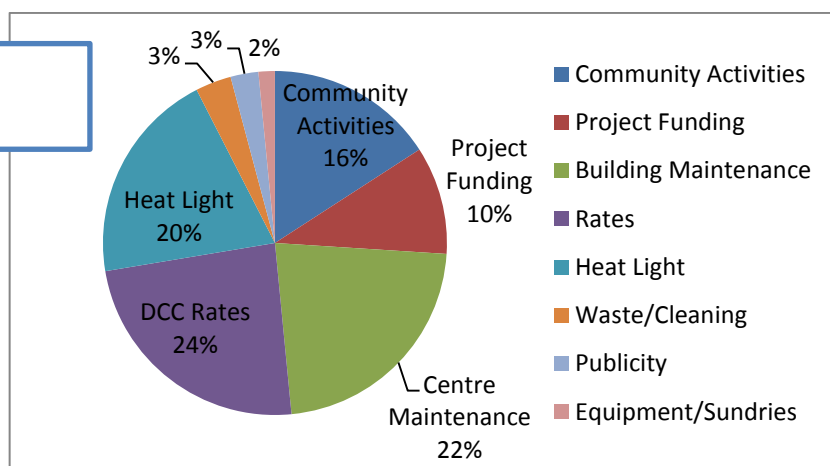
Over the year the Resource Centre welcomed over 53 community and voluntary organisations to the Macro Community Resource Centre, with 47% of these groups being local community groups and over 36,623 people calling in or using our meeting and training rooms and the services offered by the Resource Centre. Our free internet station based in the reception area has continued to prove to be very popular with the local community.

### Resident Projects

In 2013 we welcomed The Irish penal reform Trust to the resource Centre the Irish Penal Reform Trust is a non-governmental organisation and registered charity which works to advance the rights of all persons in the penal system and towards the goal that imprisonment should be a sanction of the last resort

## Macro Charity Shop

### INCOME ANALYSIS MACRO CHARITY SHOP



### *Charity Shop Shared Funding/Community Activities*

In 2013 26% of the income generated in the charity shop was used for:

- Shared with community projects resident within the Resource Centre
- Community activities for children, pre-schoolers and Senior Citizens

## Shared Charity Shop Funding

The groups to benefit from the shared funding were:

### George's Hill Community Employment

George's Hill Community Employment Project applied for the maximum Grant of €700.00 which was spent in St Michan's Crèche with 11 children on new window blinds to provide privacy for the children attending, in Constitution Hill Crèche 13 children on new play equipment for the children and in Step By Step Project on a Halloween party and an outing for 70 children

### North West Inner City Training and Development Project

The North West Inner City Training and Development Project applied for the maximum grant of €700.00 which was spent on an Anger Management Course for all their participants

### Pitter Patter crèche

Pitter Patter crèche applied for €611.50 which was used to purchase storage equipment for toys which enhances the safety aspect of the playroom. Over 40 children benefit from Pitter Patter crèche

### Macro Senior Citizens



Macro Senior Citizens applied for €375.00 to host a Christmas party for the elderly in the community, the party took place in a local restaurant and 25 senior citizens attended for a Christmas lunch.

#### The Snug Counselling Service

The Snug Counselling Service applied for the maximum grant of €700.00 to provide a project that supports families of people who are struggling with substance misuse of abuse on a daily basis. Families or other community members will come together to make a quilt which will be presented at a Service of Hope and Commemoration in May 2014

The Macro Charity Shop is staffed by one member of staff seconded from the Parish Employment Network Programme funded by FAS and one staff member from the TUS Programme funded by the Dept. of Social Protection plus three volunteers. The Charity shop relies on volunteers for their support and enthusiasm and their time given to assist with sales. All goods on sale are presented in an attractive way and we offer advice and a friendly smile. Our shop relies on the generosity of people from the local community who donate their unwanted items for resale. In 2013 our total income was €26,726.00.



After all costs are paid the remaining income is used in accordance to our charitable purpose for the running the Macro Community Resource Centre and our objective is to provide more community activities for the local community.



Our Charity Shop has become popular with everyone. It reuses second hand items and is a form of re-cycling thus reducing the amount of waste going landfill. The shop sells a mix of clothing, books, music and bric-a-brac. Unsold clothing stock is sold to textile merchants for re – cycling or reuse.

### **Community Activities**

*All of our community activities are funded mainly by the Macro Charity Shop and from small community grants from Dublin city Council*

*Our activities are promoted on our new Facebook page which keeps people up to date with events and activities*

#### **Macro Lego Club**

Our 2nd Lego Club opened on the 9th April and the program ran for 8 weeks. 10 children attended weekly.

#### **Easter Drama Camp**

Our Easter Drama Camp engaged children drama and games activities for the week after Easter it was run By The Mannequin Theatre Group who donated their time for free

### **Macro Plant Sale**

Our 2<sup>nd</sup> plant sale was held over June bank holiday plants were supplied by Dublin City Council, window boxes, hanging baskets and a wide variety of other containers were sold to enhance the local area. Many people welcomed the colour the plants brought to their street



### **Alzheimer's Tea-Day**

Our annual 4<sup>th</sup> Alzheimer's Tea day was held in May and was well supported by the local community and residents of the Community Resource Centre

### **Job Seekers Information day**



The Job Seekers Information Day was run in conjunction with Joe and Emer Costello who sourced information providers to engage with the unemployed from the local community.

### **Macro Summer Project**

A three week programme of activities for children aged 4 to 12 years was held from the 8<sup>th</sup> July to the 25<sup>th</sup> July and was attended by children. Our tutors Michelle Jenifer and Eileen provided Story Telling Picnic, Games/Board Games, Jigsaws, Lego and Film Arts & Crafts/Drama Cookery



Table Quiz and Bingo. The children came from St Michan's House, Chancery House, Parnell Street, Constitution Hill, Jervis Place Kevin Barry House, Anne Street and other surrounding areas. Children of all nationalities attended making it a multicultural event. Our most successful events were the cookery and the barbecue where all the children made fruit smoothies with fresh fruit from the markets area cooked burgers and sausages decorated cup-cakes and tray bakes lots of photographs were taken for the children to take home and a great time was had by all. We would like to take this opportunity to thank all the parents who volunteered to help with the activities. The Summer Project was supported by the Macro Charity Shop and Dublin City Council



### **Senior Citizens Halloween Tea Dance**

Over 30 Senior Citizens and volunteers from the local community joined us for our 1<sup>st</sup> afternoon of music, dancing and refreshments which was enjoyed by all

### **Macro Children's Halloween Activities**

Once again we had our week long programme of Halloween activities, including, Spooky Art and Crafts Fancy Dress Party Board Games Lego Music Dance and drama. 16 children attended and enjoyed the fun

### ***Arran Street Community Garden***

Macro Building Management along with Dublin City Council facilitated the start-up of the get together of residents from Ormond square and surrounding streets with the aim of creating a temporary community garden at the corner of Aaran Street. Local business and the local community along with Dublin City Council met many time to draft plans and develop ideas for the space. It is anticipated the actual garden will materialise in 2014

### ***Children's Pre School Christmas Party with Santa***

In December we hosted our 8<sup>th</sup> annual Christmas pre-school Christmas party with a puppet show disco and Santa for over 70 pre-school children from the Pitter Patter Crèche, Tiny Toes Crèche, St Michan's Crèche and Constitution Hill Crèche A great time was had by all even the parents who enjoyed a welcome cup of tea



### ***Senior Citizens Christmas Party***

The music was provided by our own DJ Denis who was a great hit with 30 Senior Citizens who attended the fun afternoon of dining and dancing and a bit of craic.



### ***Christmas Gathering***

Our last event for the year was our 11<sup>th</sup> Christmas Gathering in our reception area with resident projects and the local community. Our Christmas carol service was performed this year by Music Matters Community Choir who sang beautifully. Refreshments were available for all. Our annual raffle this year was in memory of our receptionist Mary Curran (RIP) all funds raised were donated to St Francis Hospice Raheny .



*Music matters Community Choir*

*The Crèche Children watching the Carol Service from the balcony*

**Macro Building Management Ltd**  
 (A Company Limited by Guarantee and not having a Share Capital)

Balance Sheet as at 31 <sup>st</sup> 2013		December
2013		2012
Current assets		€
Debtors		35
Cash at bank and		in hand
		64
Creditors: amounts falling due within one year	<u>(20,747)</u>	<u>(13,772)</u>



Net current assets		<u>210,547</u>	<u>198,292</u>
Total assets less current			
Liabilities		210,547	198,292
Net assets		<u>210,547</u>	<u>198,292</u>
Reserves			
Other reserves	8	<u>210,547</u>	<u>198,292</u>
General Reserve		<u>210,547</u>	<u>198,292</u>

The financial statements were approved by the Board on 19<sup>th</sup> February 2014 and signed on its behalf by

May Burke  
Secretary

Joan McConvey  
Director

**MACRO Building Management Ltd**  
**(A company limited by guarantee not having a share capital)**  
**Income & Expenditure Account for the year ended 31 December 2013**

	<b>2013</b>	<b>2012</b>
	<b>€</b>	<b>€</b>
<b><u>Income</u></b>		
Contribution	76,804	79,439
Short-term Lettings	14,902	10,021
Pobal – Wages Grant	146,198	146,198
DCC License Fee	5,021	66,499 -
DCC Management Grant	110,000	110,000
Equipment Sale	150	-
Community Activities	710	710
Charity Shop	26,726	24,780
Communication Services	3,350	4,199
Support Services	3,967	3,223
Catering	2,797	2,457
Waste Labels	502	556
Maintenance DCC	2,378	-
Miscellaneous Income	440	
Deposit Interest Received	1,916	3,007
Macro Men's Group Grant	500	400
DCC Summer Activities Grant	803	1,874
Projects Vat	-	13,036

Department of Social Welfare	282	94
<b>Total Income</b>	<b>397,446</b>	<b>466,393</b>
<b>Expenditure</b>		
Wages and Salaries	224,048	228,505
Er prsi contributions	20,396	20,508
Charity Shop	411	390
Rates	9,453	7,673
Service & Maintenance Charges	39,383	43,701
Insurance	3,003	3,007
Light and Heat	34,358	34,450
Janitorial	2,100	3,067
Equipment & fixtures	2,187	2,420
Office expenses	9,533	7,791
Publicity	923	228
Telephone and Fax	6,338	6,589
IT Maintenance & restructuring	4,341	3,303
Catering	2,351	2,206
Waste Management	1,676	1,506
Men's Group	369	400
Community Activities	4,240	3,512
Policy Development	-	338
Property License	3,240	80,386
Audit	3,075	3,075
Bank Charges	612	613
Vat Refunds to Projects	442	1,999
Sinking Fund	1,000	
COMMUNITY Shared Funding	2,712	
Transfer to general reserve	-	10,726
<b>Total Expenditure</b>	<b>385,191</b>	<b>466,393</b>
<b>Income over Expenditure</b>	<b>12,255</b>	
<b>Total</b>	<b>397,446</b>	

This year as in the past Macro Building Management wishes to acknowledge the support given by many agencies projects and individuals.

Our gratitude is expressed to

DEPT OF SOCIAL PROTECTION for part funding the staff of the Resource Centre under the Community Services Programme administered by POBAL.

DUBLIN CITY COUNCIL Advisors Mary McInerney, Marion Finglas, Fergus Synnott and Niall Byrne and the Development Department of Dublin City Council for part funding for staff and maintenance and providing a support service to the Resource Centre.

#### ADVISORS TO THE BOARD

The focused ethos of Macro Building Management is the inclusion of the community of the Markets Area in their availing of the services provided in the resource centre. In this regard we acknowledge the time and energy given by projects through their staff and voluntary Management Boards. Projects commitment to the service for the community is vital and for this we acknowledge their commitment.

#### Projects

GEORGE'S HILL COMMUNITY EMPLOYMENT PROJECT  
CITY NORTH WEST CITIZEN'S INFORMATION SERVICE

MACRO SENIOR CITIZENS SERVICE  
 NWIC TRAINING & DEVELOPMENT PROJECT  
 PITTER PATTTER CRECHE  
 THE SNUG COUNSELLING SERVICE  
 IRISH ENVIRONMENTAL NETWORK  
 NATIONAL ADVOCACY SERVICE  
 EUROPEAN CONSUMERS CENTRE  
 IRISH PENAL REFORM TRUST

The Board of Management wishes to express our warmest thanks to all our staff for all of the hard work and outstanding contributions given. The time and energy is deeply appreciated of all our staff in making the Resource Centre the success it is today. We know we can count on our staff to go that extra mile. Thank you again.

***Building Management Staff***

Brenda Murphy	Development Manager`	Patricia Trumble	Assistant Manager
Mary Hynes	Anne Mackey	Denise Towell	Mary Curran(RIP March )
David Crowley	Jason Kearns	Christopher Bardon	Carol Dodrill
Carol Rollo	Caroline Kenny		

***Parish Employment Network***

Eileen Cahill

***Jobbridge***

Craig O 'Beirne

***TUS participants***

Lynn Dalton Terence Fagan Mohamad Hernandez

***Charity Shop Volunteers***

Dominic O Neill Linda Konadu Joan McConvey  
 Annette Darcy