

MACRO BUILDING MANAGEMENT LTD

ANNUAL REPORT 2010

	Page
Contents	2
Chairperson Address	3
Development Manager's Address	4
Vision and Mission Statements	5
Company Details	6
Section 1	
Management and Staff	7 -
8	
About the Macro Community Resource Centre	9
Services and Project Profiles	10 - 12
Use of Facilities	13

CHAIRPERSONS ADDRESS

*ON OUR FUTURE I HAVE THOUGHT HAD ABOUT WHERE OUR DEVELOPMENT LIES AND FEEL WE ARE FACING A LOT OF DIFFICULTIES AND CHANGES IN THE FUTURE. WE HAVE EVALUATED OUR SHORT AND LONG TERM GOALS THROUGH THE DEVELOPMENT OF OUR STRATEGIC PLAN (2012-2015) EVERYONE FROM STAFF TO PROJECTS HAS BEEN AFFECTED BY THE ECONOMIC CLIMATE AND THIS HAS LED TO VERY STRESSFUL TIMES FOR OUR COMMUNITY AND I HOPE WE CAN WORK OUR WAY THROUGH OUR DIFFICULTIES.*

*IN REALITY WE HAVE BEEN SUCCESSFUL IN THE MANAGEMENT OF THE MACRO COMMUNITY RESOURCE CENTRE AND AS WE WORK FOR THE COMMUNITY WE HOPE TO CONTINUE TO DEVELOP THE CENTRE A VIBRANT COMMUNITY CENTRE.*

*WE RECOGNISE PROJECTS FACE DIFFICULT FINANCIAL TIME AND WE HOPE TO RETAIN ALL PROJECTS THEIR STAFF AND OURS. WE WELCOME OUR NEW ADVISORS TO THE BOARD AND WE LOOK FORWARD TO 2012.*

*TO END I WOULD LIKE TO THANK OUR BOARD MEMBERS FOR THEIR HARD WORK DURING THE YEAR, AND I WOULD LIKE TO THANK AND CONGRATULATE OUR DEVELOPMENT MANAGER AND OUR STAFF WHO CONTINUE TO PROVIDE AND EXCELLENT SERVICE.*

*THANKING YOU*

*PATRICK DELANEY*  
*CHAIRPERSON*

### **DEVELOPMENT MANAGER'S ADDRESS**

We are proud of the Macro Community and Resource Centre and acknowledge the importance of delivering a quality service. We have a continued commitment to improving the fabric of the community where we live and work and even though 2011 was a challenging year for us we look forward to 2012 and the challenges it may bring by focusing on our community's needs.

2011 was a year of achievement in many ways our accommodation space was fully occupied, staffing levels were maintained, work experience was offered to many and the Charity shop permitted us to maintain our services

Throughout 2011 we continued with our efforts to strengthen our financial position through the development of the charity shop and achieving full occupancy of the project space. We consistently review our services and seek opportunities to broaden the community use of the resource centre, our strong commitment to understanding our community helps us to define our services to fulfil the community needs.

We are conscious of the severe and continued pressure projects are under due to the current economic climate as funding has been reduced in all cases. It remains a challenge to Macro Building Management to offer support to all our community projects

Our board continues to develop and we welcomed Joan McConvey as a new Director and we said goodbye to Barry Kennedy who was an advisor for 5 years, we thank Barry for his time and commitment.

On a personal note I would like to thank the voluntary Board of Management and the advisors for their excellent work and strong commitment, insights and work in guiding and governing the Macro Community Resource Centre on behalf of the people of the Markets area.

I would like to acknowledge the on-going support and financial assistance from Dublin City Council and The Dept. of Social Protection/Pobal and continue to look forward to working with their representatives and in conclusion I would like to thank our employees for their outstanding work in these recessionary times where more input is expected for less rewards.

Without their dedication we would be unable to provide and maintain the services of the Macro Community Resource Centre

As always I continue to be inspired by the nature of the people of the Markets community who continue to work for the improvement of their community life.

Our focus for 2012 is to steer the Resource Centre through its core activities and to focus on developing a greater number of community activities.

Brenda Murphy (Development Manager)



## **Our Vision**

---

## **Our Mission**

---

#### Contact Information

Name: MACRO Building Management Ltd  
Address: MACRO Community Resource Centre  
1 Green Street  
Dublin 7

Tel: 01 8737000 / 01 8737009

Fax: 01 8737091

E-mail: [info@macrobuilding.ie](mailto:info@macrobuilding.ie)

Legal Status: In November 2001 MACRO Building Management  
became An incorporated company limited by guarantee.

Company Registration Number 350055

Charitable Status In August 2002 the company was granted Charitable  
Status

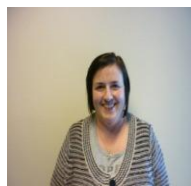
CHY Number 14885

Auditors Howlin O'Rourke & Co  
Unit 4  
The Seapoint Buildings  
Clontarf  
Dublin 4

Bankers

Allied Irish Banks  
Capel Street  
Dublin 1

**MACRO BUILDING MANAGEMENT LTD  
BOARD OF MANAGEMENT 2011**



**MACRO COMMUNITY RESOURCE CENTRE STAFF**

## **ABOUT THE MACRO COMMUNITY RESOURCE CENTRE**

THE MACRO COMMUNITY RESOURCE CENTRE IS A NON - PROFIT MAKING FACILITY WHICH PROVIDES OFFICE ACCOMMODATION AND ACTIVITY SPACE TO COMMUNITY AND VOLUNTARY ORGANISATIONS WHICH SERVE THE PEOPLE OF THE MARKETS AREA OF DUBLIN'S NORTH INNER CITY. THE RESOURCE CENTRE WAS BUILT IN 2001 BY DUBLIN CITY COUNCIL IS BASED IN DUBLIN'S NORTH INNER CITY AND OFFERS AN EXCELLENT ENVIRONMENT FROM WHICH A NUMBER OF SERVICE PROVIDERS IN THE AREAS OF YOUTH, DISABILITY, CHILDCARE, DRUG RECOVERY, EDUCATION COMMUNITY DEVELOPMENT, SENIOR CITIZENS, COMMUNITY UP SKILLING AND INFORMATION PROVISION WORK TOGETHER

THE MACRO COMMUNITY RESOURCE CENTRE PROVIDES THE MARKET'S AREA IN GENERAL WITH AN INTEGRATED FOCUS FOR COMMUNITY SERVICES AND FACILITIES. IT IS THE HOME FOR A VARIETY OF ORGANISATIONS THEIR STAFF AND CLIENTS OFFERING A SAFE, SECURE AND DISABLE FRIENDLY ENVIRONMENT TO MEET THE NEEDS OF THE COMMUNITY.

ADDITIONAL SERVICES PROVIDED TO THE GENERAL PUBLIC AND

RESIDENTIAL PROJECTS INCLUDE SUPPORT STAFF, ADMINISTRATION, PAYROLL, CLEANING, MAINTENANCE, PHOTOCOPYING, FAXING, WORD-PROCESSING, EQUIPMENT HIRE FOR MEETINGS SECURITY AND MAINTENANCE OF COMMON AREAS OF THE RESOURCE CENTRE. POSTAL SERVICE EXHIBITION SPACE AND COMMUNITY NOTICE BOARDS

### **SERVICES AT THE MACRO COMMUNITY RESOURCE CENTRE**

Macro Building Management offers office accommodation and activity space to the following Residential groups

<b>Name of Group</b>	<b>Service provided</b>	<b>Current status</b>
Pitter Patter Crèche	A community Crèche providing affordable childcare for 32 children, 16 per morning and afternoon sessions	Commenced Nov 2002
North West Inner City Training and Development	A training and development project for stabilised drug users	Commenced June 2002
North West Citizens Information Service	Providing a free and confidential information and advice service on a wide range of services and entitlements to the wider community.	Commenced May 2003
George's Hill Community Employment.	A Community Employment project providing childcare and administration staff to local community projects	Commenced April 2002
Macro Senior Citizens	A drop in service providing social activities for senior citizens (Yoga, art, dancing, outings, bingo and crafts) plus home visits for elderly living alone.	Commenced April 2002
Snug Counselling Service	A community based counselling service for families and recovering drug users affected by addictions (drugs alcohol gambling and eating disorders)	Commenced April 2002
Greater Dublin Centre For Independent Living	A community employment project providing a home or work support service to persons with disabilities	Commenced March 2004



Irish Environmental Network	Represents to government the capacity building and funding needs of its member organisations, all of whom are involved in one way or another in the well-being, protection and enhancement of the environment.	Commenced Sept 2010
European Consumer Centre	Offers advice on consumer rights when buying goods or services in another European country (including online). This service is free and confidential	Commenced Dec 2010
National Advocacy Service	The National Advocacy Service for People with Disabilities (NAS) provides independent, representative advocacy services for vulnerable people with disabilities.	Commenced April 2011

ALZHEIMER'S SOCIETY

ASS

FOR CIVIL LIBERTIES

SLIGO

BRADOG YOUTH SERVICES

CIARAN COLLEY COUNSELLOR

COMMUNITY NETWORK EMPLOYMENT

CITY CENTRE Citizens Information Service

CLONDALKIN Citizens Information Service

IRELAND

CORNER LADIES CLUB

ANONYMOUS

DERMOT PHILIPS COUNSELLOR

DESIGNING DUBLIN

DISABILITY FEDERATION

DISABILITY SUPPORT SERVICE

VOLUNTEERING

DIVERSITY & EQUALITY WORK

DOMINICK ST COMMUNITY GROUP

EMER COSTELLO LABOUR COUNSELLOR

FAESTA

FAS

FOOD ACTION

NETWORK

GDIL PHOTOGRAPHY FOCUS GROUP

IRISH DOCTORS ENVIRONMENT

AN TAISCA IRISH COUNCIL

ART & CRAFT CLASSES IT

KOREAN CULTURE

NATIONAL ADVOCACY SERVICE

NATIONAL YOUTH COUNCIL

NEUROLOGICAL ALLIANCE

OUTHOUSE NARCOTICS

PILATES

PHIBSBOROUGH BOXING CLUB

ROSYCROSS

SEA SHEPARD IRE

SIMON COMMUNITY

SPANISH CLASS (MASSIAN)

SPANISH LANGUAGE CLASS

SPANISH CATALAN CLASS

SUPPORT SERVICE DISABILITY

TRANSGENDER EQUALITY

TURKISH CLASS



HSE OCCUPATIONAL THERAPIST WORKGROUP  
DISABILITY  
HOUSE OF PRAYER

V.HORGAN COUNSELLO  
FOR PEOPLE WITH  
WEIGHT WATCHERS  
YOGA CLASS ELAINE HICKEY  
YOGA CLASS RUTH CARSON

The Macro Community Resource Centre Charity Shop is a social enterprise selling used goods donated by members of the public. The shop is staffed one person from the Parish Employment Network Programme two people from the TUS Programme and by community volunteers.

As our items are for sale obtained for free and our business costs are low many items are sold at a very low price. After all costs are paid all remaining income from sales is used according to our stated charitable purpose. Operating costs include maintenance, rates, electricity, telephone, advertising, fixtures and fittings and waste disposal.

The Charity Shop sells a mix of clothing books music foot ware and bric-a-brac. Unsold clothing is sold on to textile recyclers so all items donated raise funds for the Macro Community Resource Centre.

CHARITY SHOP  
STAFF



# A YEAR IN PROGRESS

## Income

### Grants and generated funding

Department Social Community & Family Affairs (Staffing)	€146,198.00	
Dublin City Council (Maintenance and Staffing Grant)		€110,000.00
Own Sources		€105,549.00
(Income generated from Contributions Short Term Lettings and Support Services)		
Charity Shop		€ 14,509.00
HARP Community Gain Refurbishment Grant		€ 2,500.00

## Strategic Plan 2012-2015

The Strategic Plan 2012 to 2015 inclusive was drawn up to provide a focus for the work of the organisation to allow energy to be directed to what is most important to achieve the aims of the organisation. It is a progression from our 1<sup>st</sup> Strategic Plan from 2009 to 2011.

The board has reviewed the 1<sup>st</sup> Strategic Plan and following consultation with staff, community projects, the local community and statutory bodies it has drafted the 2<sup>nd</sup> Strategic Plan.

The Strategic Plan was finalized in 2012 and has aided us to develop a Community Resource Centre that thinks and act strategically. It provides us with goals for our organisation and helps us to focus our response to present-day challenges and to adhere to our current values.

In drafting the Strategic Plan we have reviewed our mission, mandates, structures, systems, services and our staff, we have also consulted with staff, the board of management, community projects and the local community to identify issues and improve services and we would like to thank them all for taking the time to assist us.

Our Strategic Plan is a cost effective tool which we will use for embracing new ideas and focusing on our future.

## Employment, Work Experience and Training

### Community Services Programme Renewed until Dec 2013

The Community Service Programme assists in supporting social inclusive and economic development within the community. The programme is funded by the Dept. of Social Protection and provides part funding for the provision of five full time six part time positions. 90% of staff employed under the Community Service programme are employed from the Markets Area and Dublin 7 or 1 with 10% coming from the wider Dublin area.

### Work Experience

#### Work Placement Programme

The work placement programme provided experience for one person for 9 months who reviewed our health and safety systems and our hazard risks. The work placement person progressed to full time employment after 7 months.

### Transition Year Students

Work experience was provided for students from St Joseph's School Stanhope Street and St Paul's School Brunswick Street.

### The Tús Work Programme

The Tús initiative is a community work placement scheme providing short-term working opportunities for unemployed people. All the work carried out by participants in the Tús programme.

benefits the community. The Macro Community Resource Center has been appreciative of the 4 Tus staff who assist with the Charity shop, maintenance and administration

#### Training/Courses

During the year numerous classes were held in Spanish, Turkish, Yoga, Manual Handling, First Aid, Basic Computer and Internet Skills

### **People Projects and Activities**

#### *Macro Building Management Board.*

In 2011 Barry Kennedy an advisor of 5 years resigned and we welcomed Ms Joan Mc Convey of Smithfield as a new director. The board meets on a regular basis approximately nine times a year with working groups meeting when necessary

#### User Groups

Over the year the Resource Centre welcomed over 49 community and voluntary organisations to the Macro Community Resource Centre, with 30% of these groups being local community groups and over 37,000 people calling in or using the centre during the year.

#### Resident Projects

We were saddened by the loss of the Community ICT Project in March due to lack of funding but we welcomed the National Advocacy Service who joined us in providing an advocacy service for people with disabilities and the European Consumer Centre who joined us for their first full year in January.

#### Activities

During 2011 a new Project Forum began the aim is to develop networking between all users of the Resource Centre, we also held our Alzheimer's Tea Day to fundraise for the Alzheimer Society. The Green Room was refurbished to allow for greater use, an internet station was set up in the reception area providing free internet access for the local community and wireless broadband was installed in the green room.

In December we hosted our annual Christmas party with a puppet show and Santa for over 70 pre-school children from the markets area.

### **Our Carbon Footprint**

Many activities that we engage in on a daily basis lead to carbon emissions therefore in the Macro Community Resource Centre we have endeavoured to reduce our carbon footprint and in the process keep our costs low and support the environment.

Our aim for 2011 was to reduce our water and electric usage.

Our conservation measures for water included:

- Introduction of hippo bags in cisterns to reduce the amount of water required for flushing toilets.
- Installing automatic and timed flushes on urinals.
- Reduced water pressure on sinks.
- Change taps to push buttons to reduce usage.

Our conservation measures on lighting included:

- Reviewed all lighting systems reducing sensors timings.
- Turned down water heater thermostats and turned off those not in use

### **Maintenance**

Our maintenance mission is to ensure the Resource Centre is a clean and safe environment for all users. To achieve this we engage a number of companies plus our own staff to provide services and maintain the Centre, all electrical, mechanical units and water works are serviced bi-annually to ensure we have reliable operating systems

# FINANCE REPORT 2011

---

## MACRO Building Management Ltd Balance Sheet As at 31<sup>st</sup> December 2011

	2011	2010
	€	€
<b>Current assets</b>		
Debtors	492	3864
Cash in bank and in hand	<u>246,897</u>	<u>212,219</u>
	247,389	216,083
<b>Creditors: amounts falling Due within one year</b>	<u>(59823)</u>	<u>(62,200)</u>
<b>Net current assets</b>	<u>187,566</u>	<u>153,883</u>
<b>Total assets less current liabilities</b>	<u>187,566</u>	<u>153,883</u>
<b>Net assets</b>	<u>187,566</u>	<u>153,883</u>
<b>Reserves</b>		
Other reserves	<u>187,566</u>	<u>153,883</u>
<b>General Reserve</b>	<u>187,566</u>	<u>153,883</u>

**MACRO Building Management Ltd**  
**Income & Expenditure Account for the year Ended 31<sup>st</sup> December 2011**

	2011	2010
	€	€
<b><u>Income</u></b>		
Contribution	79,018	58,954
Short-term Lettings	11,118	15,414
Pobal – Wages Grant	146,198	146,196
DCC Management Grant	110,000	110,000
Community Gain	2,500	-
HSE Northern	-	5,365
Community Event/Children's Party	396	759
Charity Shop	14,509	5,938
Communications services	5,695	7,318
Support Services	3,916	3,972
Training Fees	120	80
Catering	2,535	2,535
Rates	6,536	-
Maintenance	5,209	-
Waste Labels	557	582
Light & Heat Contributions	-	1,043
Deposit Interest Received	<u>4,022</u>	<u>2,909</u>
<b>Total Income</b>	<b>392,399</b>	<b>361,065</b>
<b><u>Expenses</u></b>		
Wages and Salaries	230,228	230,295
Er PRSI Contributions	21,919	23,336
Training	363	400
Charity Shop	381	-
Rates	5,846	11,367
Service & maintenance charges	36,122	23,820
Insurance	2,955	3,471
Heat & Light	27,539	27,887
Janitorial	2,448	2,353
Equipment & Fittings	1,283	2,150
Office Expenses	7,457	7,340
Telephone & Fax	8,483	10,144
IT Maintenance & Restructuring	6,027	3,660
Catering	1,434	1,377
Community Events	1,184	549
Waste Management	1,447	1,036
Audit	3,075	3,025
Bank Charges	525	477
Transfer to general reserve	<u>33,683</u>	<u>8,378</u>
<b>Total</b>	<b>392,399</b>	<b>361,065</b>

**ACKNOWLEDGEMENTS**

This year as in the past Macro Building Management wishes to acknowledge the support given by many agencies projects and individuals.

Our gratitude is expressed to

DEPT OF SOCIAL PROTECTION for part funding the staff of the Resource Centre under the Community Services Programme administered by POBAL.

DUBLIN CITY COUNCIL Advisors Mary McInerney, Marion Finglas and the Development Department of Dublin City Council for part funding for staff and providing support and maintenance service to the Resource Centre.

#### ADVISORS TO THE BOARD

Deirdre Casey	City North West Citizens Information Service
Barry Kennedy	Marketing
Olwyn Bennett	Barrister
Joan McConvey	Community Advisor (appointed a Director in mid-2011)

The focused ethos of Macro Building Management is the inclusion of the community of the Markets Area in their availing of the services provided in the resource centre. In this regard we acknowledge the time and energy given by projects through their staff and voluntary Management Boards. Projects commitment to the service for the community is vital and for this we acknowledge their commitment.

#### Projects

**GEORGE'S HILL COMMUNITY EMPLOYMENT PROJECT**  
**CITIZEN'S INFORMATION SERVICE**  
**MACRO SENIOR CITIZENS SERVICE**  
**NWIC TRAINING & DEVELOPMENT PROJECT**  
**PITTER PATER CRECHE**  
**THE SNUG COUNSELLING SERVICE**  
**DUBLIN 7 CENTRE FOR INDEPENDENT LIVING**  
**IRISH ENVIRONMENTAL NETWORK**  
**NATIONAL ADVOCACY SERVICE**  
**EUROPEAN CONSUMERS CENTRE**

The Board of Managements greatest resource is the dedication commitment and professionalism of our staff. We wish to personally thank all our staff for their continued dedication in delivering the services required in the day to day management of the resource centre.

#### ***Building Management staff***

Brenda Murphy	Development Manager`	Patricia Trumble	Assistant Manager
Mary Hynes	Anne Mackey	Denise Towell	Mary Curran
David Crowley	Jason Kearns	Christopher Bardon	Carol Dodrill
Carol Rollo	Caroline Kenny		

#### ***Parish Employment Network***

#### ***TUS participants***

Eileen Cahill	
Dionne McVeigh	Jade Fagan
Danielle Mumbley	Jennifer Devoy