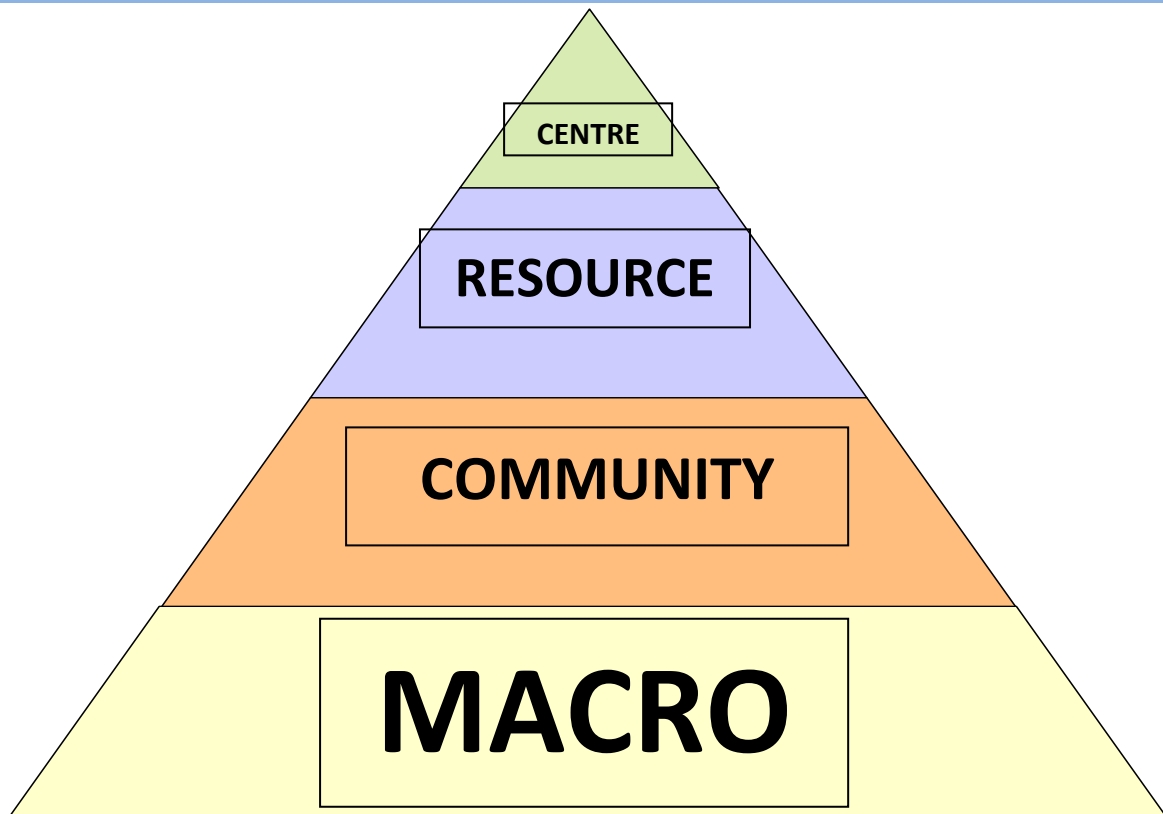


# Macro Building Management Ltd MACRO COMMUNITY RESOURCE CENTRE



## Annual Report

## 2014

## Contents

# **MACRO BUILDING MANAGEMENT LTD      ANNUAL REPORT 2014**

	Page
Contents	1
Chairperson Address	2
Development Manager's Address	3
Vision and Mission Statements	4
Company Details	5
Management and Staff	6 - 7
About the Macro Community Resource Centre	8
Project Profiles	9
Community and Voluntary Use	10
Accomplishments	11 - 18
Finance Report	19 - 22
Acknowledgements	23

## **Chairperson Address**

It is with great pleasure that I present the Macro Building Management 2014 Annual Report

As our report shows, we are continuing to provide a service to the people of the markets community through the provisions of our meeting and training facilities, our resident projects and our highly popular community activities.

Our vision is to provide a Resource Centre for the Markets Community and to empower our community to achieve sustainably improvements to the quality of their life. Our Vision continues to drive our planned work over the next three years, as set out in our Business Plan. Our strength is our ability to work together with our community and voluntary partners, along with our statutory funders and Dublin City Council.

As Chairperson of the board of Macro Building Management I would like to thank all the staff for their continued commitment to the Markets community especially in these difficult economic times.

I would like to thank the board of Macro Building Management for their voluntary work ensuring the sustainability of the Resource Centre, the Development Manager for her ongoing dedicated work and all who avail of the services.

Stephen O Sullivan  
Chairperson

## **Development Manager's Address**

Ongoing change and adaptation are an inevitable part of the Ireland today and 2014 was marked by positive achievements for the Macro Community Resource Centre. Despite many challenges of reduced resources and a difficult economic climate we continue to provide a community resource while adhering to increased regulatory requirements

In 2014 we reached the midpoint of our Strategic Plan, we review of our Strategic Plan noting one of our core focuses was to increase community activity this is ongoing as a result of the increased resources from our Charity Shop. We thank the local community for all their donations without which many of the community activities would not be possible.

The Development of our three year Business Plan both documents and guides us in a committed and focused direction. We commenced our journey to adopt the Code of Governance to ensure our vision, our purpose and our systems which has allowed us to be open and transparent and accountable in our work in the Markets Community.

I am happy to say that Macro Building Management's governance arrangements follows best practice, our voluntary board of Directors is responsible for overseeing and reviewing all aspects of the organisations work.

I acknowledge our funders in the public sector Dublin City Council for our maintenance and staffing grant and the Department of Social Protection (Pobal) for the staffing grant both have continued to support the Macro Community Resource Centre and on behalf of the local community we thank them

I would like to acknowledge the work of our retiring Chairpersons Patrick Delaney and Neil Dwane, Patrick Delaney served as Chairperson of the board of Macro for over 10 years and we appreciate all the time and work he was committed to doing.

I would like to thank the Board for their assistance, support and guidance during 2014 and in particular, I would like to thank our Chairman, Stephen O Sullivan, for his contribution and support.

I would especially like to thank all our staff and volunteers who work so tirelessly with a conscientious approach to make the Macro Community Resource Centre a success and with their help and the local community participation we look forward to a buoyant and dynamic 2015

In conclusion, I wish to express our gratitude to our local community for the trust they place in us. Their confidence spurs us to continue to improve our performance and to ensure that we provide a reliable service. I have every confidence, and a strong belief, in our ability to deliver that service this at every level.

Brenda Murphy  
Development Manager

# OUR VISION AND MISSION

## Vision

***TO BE THE BEST RESOURCE CENTRE IN THE COUNTRY TO PROVIDE SUPPORT SERVICES  
AND ASSISTANCE WITH NO BARRIERS***

***TO EMPOWER OUR COMMUNITY***



## Mission

***MACRO BUILDING MANAGEMENT'S MISSION IS TO WORK WITH COMMUNITY AND  
VOLUNTARY ORGANISATIONS TO PROVIDE THE COMMUNITY OF  
THE MARKETS AREA WITH SUSTAINABLE IMPROVEMENTS IN THE QUALITY OF THEIR LIFE  
THROUGH THE PROVISION OF COMMUNITY SERVICES***





## Contact Information

Name:	MACRO Building Management Ltd
Address:	MACRO Community Resource Centre 1 Green Street Dublin 7
Tel:	01 8737000 / 01 8737009
Fax:	01 8737091
E-mail:	<a href="mailto:info@macrobuilding.ie">info@macrobuilding.ie</a>
Legal Status:	In November 2001 MACRO Building Management became An incorporated company limited by guarantee.
Company Registration Number	350055
Charitable Status	In August 2002 the company was granted Charitable Status
CHY Number	14885
Auditors	Howlin O'Rourke & Co Unit 4 The Seapoint Buildings Clontarf Dublin 4
Bankers	Allied Irish Banks Capel Street Dublin 1

# MACRO BUILDING MANAGEMENT LTD

## DIRECTORS



Patrick Delaney Resigned 06/10/14



Elizabeth Kavanagh  
Company Secretary



May Burke  
Treasurer



Paul Bedford



Joan McConvey



Neil Dwane  
Resigned 24/05/14



Stephen O Sullivan  
Chairperson appointed 21/05/14



Deirdre Casey

## ADVISORS

Eamon Duffy (Dublin City Council)

Marion Finglas (Dublin City Council)

John Farrell Niall Byrne (Dublin City Council)

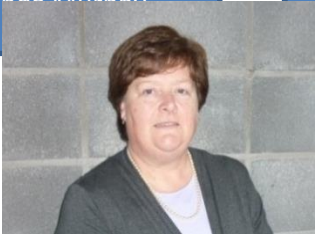
## DEVELOPMENT MANAGER

Brenda Murphy



WORKING GROUPS

Human Resources  
Patrick Delaney  
Deirdre Casey  
Patricia Trumble  
Brenda Murphy



Brenda Murphy  
Development Manager

Finance  
May Burke  
John Farrell  
Brenda Murphy  
Patricia Trumble

Health and Safety  
May Burke  
Brenda Murphy  
Patricia Trumble



Patricia Trumble  
Assistant Manager

Anne Mackey  
& Mary Hynes



Carol Rollo



David Crowley  
Jason Kearns  
Carol Dodrill



Caroline Kenny &  
Mellissa Dodrill



Christopher Bardon &  
Denise Towell



## ABOUT THE MACRO COMMUNITY RESOURCE CENTRE

THE MACRO COMMUNITY RESOURCE CENTRE IN GREEN STREET WAS OPENED IN NOVEMBER 2001. IT WAS BUILT BY DUBLIN CITY COUNCIL FOR THE PEOPLE OF THE MARKETS AREA OF DUBLIN AND FOR THE USE BY THE WIDER COMMUNITY AND VOLUNTARY SECTOR. THE RESOURCE CENTRE SERVES BY THE PEOPLE WHO RESIDE WITHIN THE BOUNDARIES OF CAPEL STREET, HENRIETTA STREET, CONSTITUTION HILL, QUEEN STREET, SMITHFIELD GREEK STREET AND THE CITY QUAYS.



THE MACRO COMMUNITY RESOURCE CENTRE IS A NON - PROFIT MAKING COMMUNITY RESOURCE WHICH PROVIDES OFFICE ACCOMMODATION AND ACTIVITY SPACE TO COMMUNITY AND VOLUNTARY ORGANISATIONS OFFERING AN EXCELLENT ENVIRONMENT FROM WHICH A NUMBER OF SERVICE PROVIDERS IN THE AREAS OF YOUTH, DISABILITY, CHILDCARE, DRUG RECOVERY, EDUCATION, SENIOR CITIZENS, COMMUNITY UP SKILLING AND INFORMATION PROVISION WORK TOGETHER.



THE RESOURCE CENTRE WAS DESIGNED BY DEREK TYNAN ARCHITECTS WITH INPUT FROM LOCAL COMMUNITY GROUPS AND LOCAL RESIDENTS GROUPS. THE 4 STORY BUILDING WITH ITS UNIQUE SHAPED ROOMS, UNIQUE BLOCK WORK AND GLASS ATRIUM PROVIDE A STRIKING BUILDING WHICH HOUSES THE 10 COMMUNITY AND VOLUNTARY RESIDENT PROJECTS INCLUDING A COMMUNITY CRÈCHE AND A SENIOR CITIZENS SERVICE.

THE MACRO COMMUNITY RESOURCE CENTRE PROVIDES THE MARKET'S AREA IN GENERAL WITH AN INTEGRATED FOCUS FOR COMMUNITY SERVICES AND FACILITIES. IT IS THE HOME FOR A VARIETY OF ORGANISATIONS THEIR STAFF AND CLIENTS OFFERING A SAFE, SECURE AND DISABLE FRIENDLY ENVIRONMENT TO MEET THE NEEDS OF THE COMMUNITY.



ADDITIONAL SERVICES PROVIDED TO THE GENERAL PUBLIC AND RESIDENTIAL PROJECTS INCLUDE SUPPORT STAFF, ADMINISTRATION, PAYROLL, CLEANING, MAINTENANCE, PHOTOCOPYING, FAXING, WORD-PROCESSING, EQUIPMENT HIRE FOR MEETINGS SECURITY AND MAINTENANCE OF COMMON AREAS OF THE RESOURCE CENTRE. POSTAL SERVICE EXHIBITION SPACE AND COMMUNITY NOTICE BOARDS THE RESOURCE

CENTRE WAS OPENED TO PROVIDE THE LOCAL COMMUNITY WITH THE OPPORTUNITY TO IMPROVE THE QUALITY OF THEIR LIFE THROUGH THE PROVISION OF LOCAL EMPLOYMENT AND TO MEET GROWING SOCIAL, DEVELOPMENT AND EDUCATIONAL NEEDS OF INDIVIDUALS, FAMILIES AND THE COMMUNITY & VOLUNTARY SECTOR.

### **RESIDENTIAL SERVICES AT THE MACRO COMMUNITY RESOURCE CENTRE**

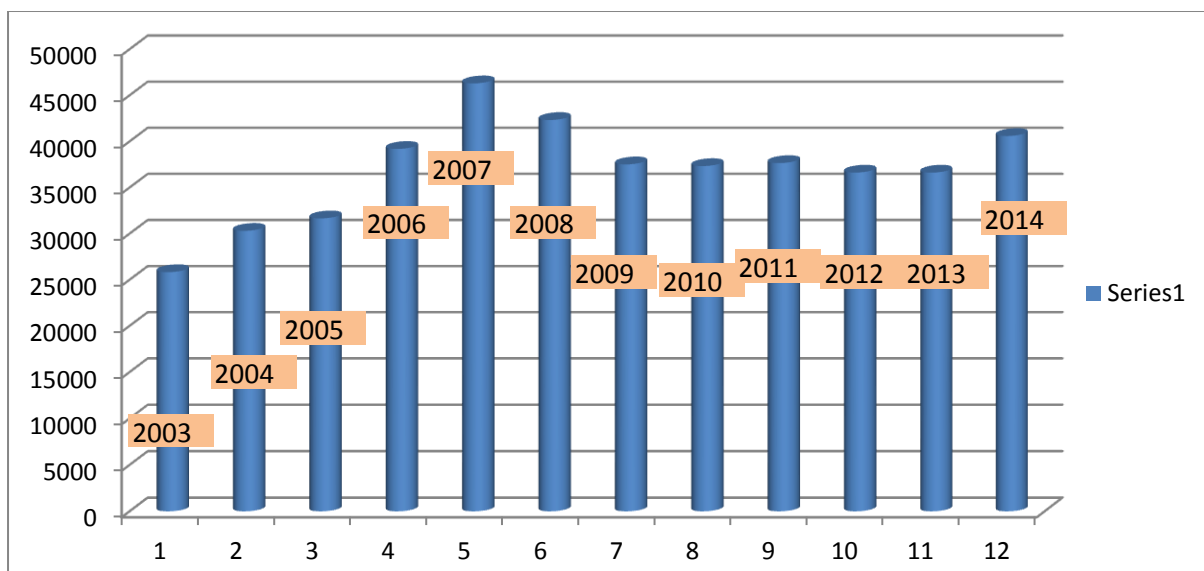
<b>Name of Group</b>	<b>Service provided</b>	<b>Current status</b>
Pitter Patter Crèche	A community Crèche providing affordable childcare for 32 children, 16 per morning and afternoon sessions	Commenced Nov 2002
North West Inner City Training Development	A training and development project for stabilised drug users	Commenced June 2002
Dublin City North West Citizens Information Service	Providing a free and confidential information and advice service on a wide range of services and entitlements to the wider community.	Commenced May 2003
George's Hill Community Employment.	A Community Employment project providing childcare and administration staff to local community projects	Commenced April 2002
Macro Senior Citizens	A drop in service providing social activities for senior citizens (Yoga, art, dancing, outings, bingo and crafts) plus home visits for elderly living alone.	Commenced April 2002
Snug Counselling Service	A community based counselling service for families and recovering drug users affected by addictions (drugs alcohol gambling and eating disorders)	Commenced April 2002
Irish Penal Reform Trust	A non-governmental organisation and registered charity which works to advance the rights of all persons in the penal system and towards the goal that imprisonment should be a sanction of the last resort	Commenced Nov 2013
Irish Environmental Network	Represents to government the capacity building and funding needs of its member organisations, all of whom are involved in one way or another in the well-being, protection and enhancement of the environment.	Commenced Sept 2010
European Consumer Centre	Offers advice on consumer rights when buying goods or services in another European country (including	Commenced Dec 2010

	online). This service is free and confidential	
National Advocacy Service	The National Advocacy Service for People with Disabilities (NAS) provides independent, representative advocacy services for vulnerable people with disabilities.	Commenced April 2011

## **RESOURCE CENTRE USAGE BY COMMUNITY AND VOLUNTARY GROUPS**

<i>Association of Childhood Professionals</i>	<i>Business in the Community</i>
<i>Canteen Ireland</i>	<i>Capel Court Management Ltd/Residents</i>
<i>Catalan Council of Ireland</i>	<i>Cats &amp; Dogs Protection Society</i>
<i>Ceartas</i>	<i>Child &amp; Family Agency</i>
<i>Centre Independent Living</i>	<i>Dublin City Centre Citizens Information Service</i>
<i>Coastwatch</i>	<i>Code for Dublin</i>
<i>Marys Abbey/Arran Street Community Garden</i>	<i>Connect with Nature</i>
<i>Macro Corner Ladies Club</i>	<i>Pre School Christmas Party</i>
<i>Tolka Parenting and Baby Programme</i>	<i>D. Lennon Drama Workshop</i>
<i>Disability Support Service</i>	<i>DSP (NWICTDP)</i>
<i>ECC Focus Group</i>	<i>Fingal County Childcare Committee</i>
<i>Canal Community Partnership TUS</i>	<i>Focus Ireland</i>
<i>Friends of Earth</i>	<i>George's Hill School/St Paul CBS School</i>
<i>Greater Dublin Independent Living</i>	<i>Greenplan Action Group</i>
<i>DCC Historical Walk and Talk</i>	<i>Irish Advocacy Network</i>
<i>Irish Wheelchair Association</i>	<i>Keep Fit Classes (Snug)</i>
<i>National Lesbian Gay Bisexual Transgender</i>	<i>Labour Party</i>
<i>Labour Party (Youth)</i>	<i>Macro Literacy Class</i>
<i>Dublin City Council Market Traders Planning</i>	<i>Maureen O'Sullivan (TD)</i>
<i>Macro Men's Group</i>	<i>Mindfulness Men's Group (Snug)</i>
<i>Music Matters Community Choir</i>	<i>National Advocacy Service</i>
<i>National Gay &amp; Lesbian Federation</i>	<i>National Youth Council of Ireland</i>
<i>Neurological Alliance of Ireland</i>	<i>Parish Employment Network</i>
<i>Parnell St Residents Association</i>	<i>Pillar Meeting (IEN)</i>
<i>Road Safety Authority</i>	<i>Snugs Men's Group (Mindfulness)</i>
<i>Ole School of Language Spanish Class</i>	<i>Belen Spanish Classes</i>
<i>Step by Step</i>	<i>Talk Action</i>
<i>Tolka Area Partnership</i>	<i>Work Options</i>

## **Macro Community Resource Centre Growth 2014**



## ACCOMPLISHMENTS 2014

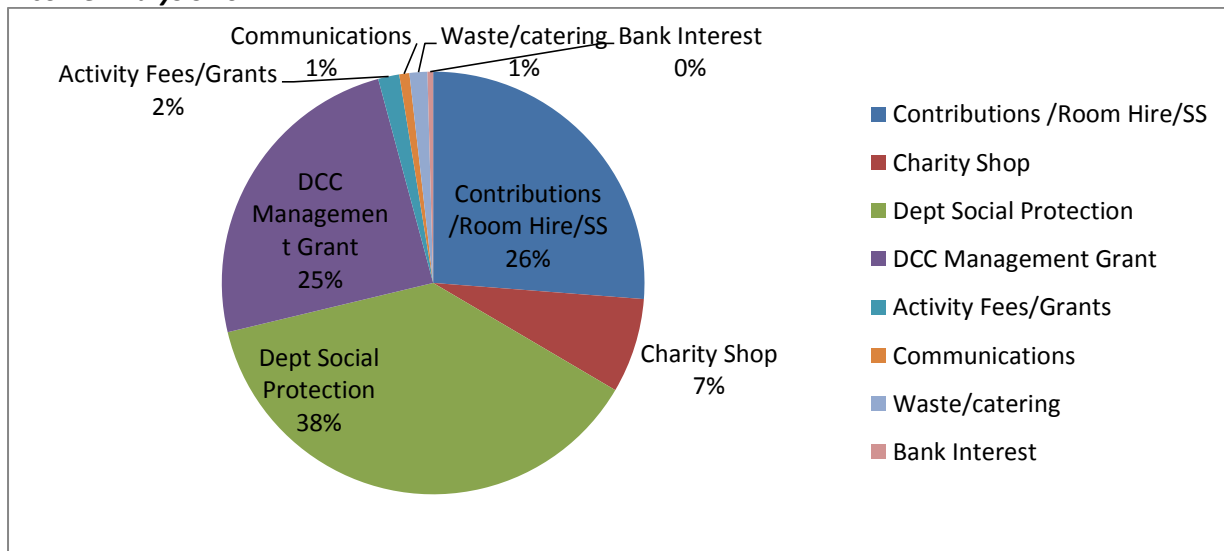
### Income

The Resource Centre's income is derived from three main sources: the Department of Social Protection staffing grant administered by Pobal, Dublin City Council maintenance and staffing grant and our own generated income which comes from project contributions, room hire and support services plus the Macro Charity Shop.

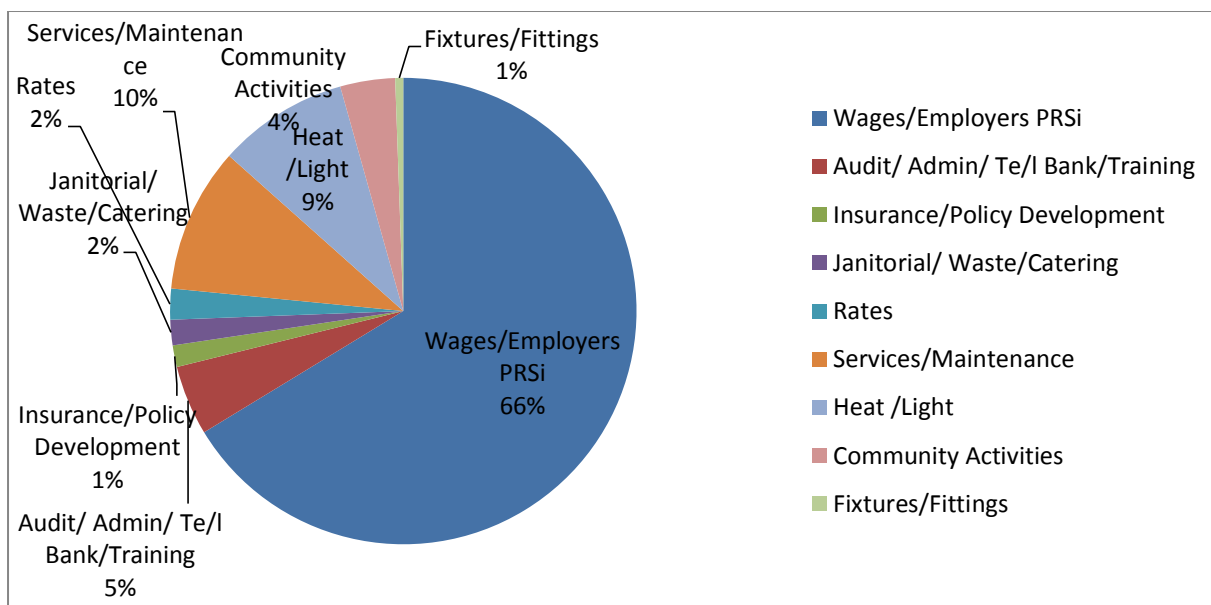
In 2014 the usage of our meeting and training rooms increased which compensated for our loss of 3% of our grant from Dublin City Council. Our Charity Shop remains an independent source of funding to allow us to provide community activities and support the running of the Community Resource centre

Our Salaries increased by 1% due to increased weekend opening, rates were up 1% due to increased water usage, maintenance costs remained steady at 10% and community Activity expenditure was increased by 2%

### Income Analysis 2014



### Expenditure Analysis 2014



## Board Matters

The board of Macro Building Management consists of eight members and a panel of four to six advisors all drawn from the local community, the community and voluntary sector, the legal profession or the business community. The board has met nine times during the year plus two directors meetings and one Human Resources and one Finance meeting. The Annual General Meeting was held in May.

From Dublin City Council we were sorry to lose Mary McInerney as our advisor and we welcomed the appointment of Fergus Synnott, due to other commitments Fergus was only with us for a short period of time. During the year we saw the resignation of our Chairperson Neil Dwane and our Director Paddy Delaney we welcomed the appointment of Stephen O'Sullivan as the new Chairperson and John Farrell as our Financial Advisor.

Under our current board the Management Agreement for the Community Resource Centre and the License Agreement for the Charity shop were renewed with Dublin City Council, The Staffing contract with the Department of Social Protection administered through Pobal was renewed for one year allowing the continued employment of our Community Services Programme staff. As part of the re contracting for the Community Services Programme a new three year Business Plan was drafted to ensure financial stability.

Early in the year the board reviewed Its Code of Conduct, Board Duties and the Conflict of Interest Policy. The Board operates to the best practice corporate governance principles both in its activities and in its use of committees, Board members register their interest in other undertakings.

During 2014 the Board commenced the process of adopting the Code of Governance to ensure an open and transparent manner of operating the Macro Community Resource Centre. The Strategic Plan was reviewed to support the board in remaining focused on their direction.

The Reserves plan was reviewed to ensure financial accountability.

In May 2014 at our Annual General Meeting our Memorandum and Articles of Association were reviewed with changes proposed and adopted.

## Statutory Notes

Safety and Health and Welfare at work Act 1989: in accordance with the above act Macro Building Management implements appropriate measures to protect the safety health and welfare of all employees and visitors to the Resource Centre.

Customer Service: Macro Building Managements policy set out its commitment to a high quality service includes a procedure for dealing with complaints.

**Complaint Equality Act 2004:** Macro Building Management supports the principle of equal opportunities in employment it opposes all forms of discrimination on the grounds of colour, race nationality, sexual orientation, ethnic religion, gender, marital status or disability. Macro Building Management commitment to implement equal opportunities is reflected in its policies and practices procedures. Its objective is to ensure that all staff and visitors are treated equally

**Prompt Payment of Accounts:** It is the policy of Macro Building Management to ensure that all invoices are paid promptly specific procedures are in place to enable it to track all invoices and to ensure that all payments are made by their due dates. Invoices are registered daily and electronic payments are issued as required to ensure timely payments.

## **Policy Development and Reviews**

In 2014 we began the process of designing a policy for our volunteers we reviewed many of our other policies including our Risk Management Policy

## **Licenses.**

The Licenses issued for space in the Resource Centre are issued by Dublin City Council. From 31<sup>st</sup> December 2014 Licenses will be issued on a bi annual basis to resident project.

## **Macro Building Management Business Plan 2015-2017**

In 2014 Macro Building Management drafted a three year Business Plan, the aim of the plan was to identify and address locally identified gaps in the provision of services for the Markets Community and to enable day to day operations of the Community Resource Centre.

The Plan addressed issues of Corporate Governance, Strategic Development, and the need for our services, sustainability and the value for money that we provide.

We reviewed our Organisation, our Social Enterprise, we conducted a Needs Analysis and commissioned an external consultant to conduct a Demographic Report on the Markets area.

Our Business Plan was submitted to our Funder the Department of Social Protection administered by Pobal and this secured funding for nine positions under the Community Services Programme.

## **Maintenance**

In the management of the facility the role of Macro Building Management is to ensure corporate and regulatory compliance plus the proper operation of all aspects of the Resource Centre to create an optimal, safe and cost effective environment for the occupants to function in. This is accomplished by managing the following activities:

Health and Safety	To control and manage all safety issues to prevent injury loss of business prosecution and insurance claims
Fire Safety	To maintain, inspect and test all fire safety equipment and systems, retaining records and inspection certificates
Security	To ensure the protection of employees and the Resource Centre users
Maintenance	To ensure testing and inspection schedules are carried out to ensure safe operation of equipment
Cleaning	To maintain a safe and clean environment for all
Operational	Day to day running of the Resource Centre

Our maintenance mission is to ensure the Resource Centre is a clean and safe environment for all users. To achieve this we engage a number of companies plus our own staff to provide services and maintain the Centre, all electrical, mechanical units and water works are serviced bi-annually to ensure we have reliable operating systems. Service contracts are in place for fire systems, alarms, doors, lifts, windows.

In 2014 our major repairs were

- The atrium roof was replaced this was co funded with Macro Building Management and Dublin City Council.
- The Leak in The Snug Counselling Service was repaired and new flooring was laid.
- In the Senior Citizens Project an extra radiator was installed and the room was re painted.
- All toilet facilities were repainted.
- The reception area received two new couches for waiting on to give the area a more homely look
- All smoke detectors were replaced and disposed of safely
- Voice Activation System repaired

## **Employment, Work Experience and Training**

### Community Services Programme

The Community Service Programme assists in supporting social inclusive and economic development within the community. The programme is funded by the Dept. of Social Protection and provides part funding for the provision of four full time and six part time positions. 90% of staff employed under the Community Service Programme are employed from the Markets Area and Dublin 7 or 1 with 10% coming from the wider Dublin area.

### The Tus Work Programme

The Tús initiative is a community work placement scheme providing short-term working opportunities for unemployed people. All the work carried out by participants on the Tús programme benefits the community. The Macro Community Resource Center has been appreciative of the 3 Tus staff that have assisted with the Charity shop, maintenance and Reception.

### Jobbridge Programme

Under the Jobbridge programme an intern was recruited as an Events Co ordinator this placement was for nine months and was a success as a greater number of activities took place.

### Jobs Initiative Programme

Under the Jobs Initiative programme we provide employment for one staff member who manages the Charity Shop on a daily basis.

In 2014 Macro Building Management took over the role of administration of the Parish Employment Network supporting the local employment of 15 people in the local community

### Work Experience

Work Experience was provided for a local school, the Employment Assistance Programme and St Michaels House.

### Training/Courses

During the year numerous classes were held in Spanish, Yoga, Crochet, Knitting Crafts, Manual Handling, First Aid, Childcare, Italian, Health and Safety Nutrition Literacy and Fire Warden Training. Exercises classes for children were available during the Halloween school break.

Two new Laptops were obtained to support community groups availing of our meeting and training facilities

### User Groups and Individual Callers

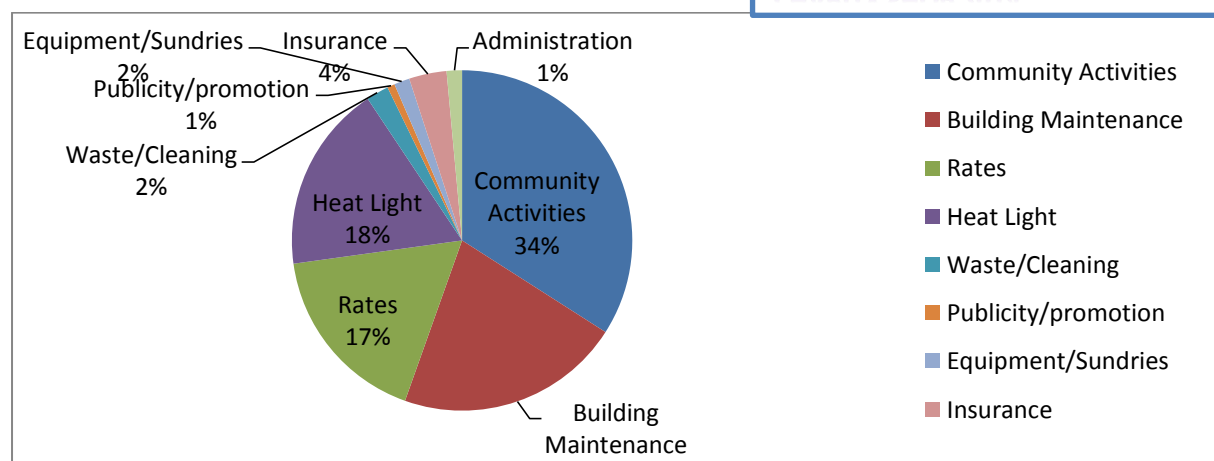
Over the year the Resource Centre welcomed over 56 community and voluntary organisations to the Macro Community Resource Centre, with 42% of these groups being local community groups and over 41,300 people calling in or using our meeting and training rooms and the services offered by the Resource Centre. Our free internet station based in the reception area has continued to prove



to be very popular with the local community to the extent that we now provide two computer stations that have been used by over 2196 people throughout the year.

## Macro Charity Shop

### INCOME ANALYSIS MACRO CHARITY SHOP 2014



#### Main notable points for 2014

- Heat and light costs were up by 2%
- Spending of €9549 was spent on community activities this represents an increase of 8% on last year's spending on community activities
- Rates costs were reviewed by the Valuation office and rates on the Charity Shop were reduced by 7%

The Macro Charity Shop is staffed by one member of staff seconded from the Parish Employment Network Programme funded by Intreo and one staff member from the TUS Programme funded by the Dept. of Social Protection plus three volunteers. The Charity shop relies on volunteers for their support and enthusiasm and their time given to assist with sales. All goods on sale are presented in an attractive way and we offer advice and a friendly smile. Our shop relies on the generosity of people from the local community who donate their unwanted items for resale. In 2014 our total income was €28,045.00.

After all costs are paid the remaining income is used in accordance to our charitable purpose for the running of the Macro Community Resource Centre and our objective is to provide more community activities for the local community.

#### Charity Shop Funding

In 2014 55% of the income generated in the charity shop was used for:

- Shared with community projects resident within the Resource Centre
- Community activities for children, pre-schoolers and Senior Citizens
- Supporting the upkeep of the Community Resource Centre

#### Shared Charity Shop Funding

The groups to benefit from the shared funding in 2014 were:

##### George's Hill Community Employment

George's Hill Community Employment Project applied for the maximum Grant of €500.00 which was spent in St Michan's Crèche with 11 children on purchasing new tables chairs and storage units and in the Step By Step Project children were supported in a visit to Woolly Wards farm

##### Pitter Patter crèche

Pitter Patter crèche applied for €500 which was used to purchase Equipment for the Crèche four High Chairs and a new baby cot.

##### Macro Senior Citizens Activities Club

Macro Senior Citizens Activities Club applied for €200.00 to travel to a Christmas Social Function.

##### The Snug Counselling Service

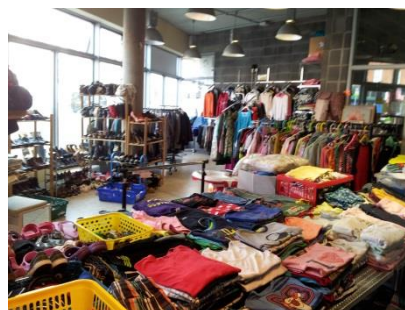
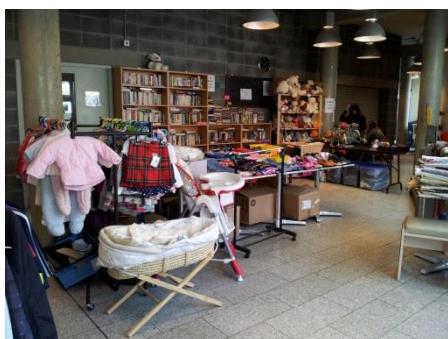
The Snug Counselling Service applied for the maximum grant of €500.00 to continue a project that supports families of people who are struggling with substance misuse of abuse on a daily basis. Families or other community members will come together to make a quilt which will be presented at a Service of Hope and Commemoration in May2014

##### Macro ladies Club

Macro Ladies Club applied for €200.00 for funding for classes and transport to their Christmas Social outing

##### Macro Men's Group

Macro men's group applied for €200.00 for funding to support inclusion of men in the community



## **Community Activities**

*All of our community activities are funded mainly by the Macro Charity Shop and from small community grants from Dublin city Council*

*Our activities are promoted on our new Facebook page which keeps people up to date with events and activities*

#### Literacy Classes

In September literacy classes commenced with the National Adult Literacy Association providing the Tutors. Overall six people attended.

#### **Nutrition Class**

Commenced 9<sup>th</sup> October 10 people attended very successful class

#### **Family Halloween Night**

The Family Halloween Evening was a great success over 100 people attending with games, art and crafts, a witch plus refreshments for adults and children a great night was had by all.



#### **Kids Exercise classes**

Fit Camp for Halloween commencing Tue 28<sup>th</sup> for 3- 4 days. On the last day the children requested arts and crafts and we were happy to oblige.

#### **Senior Citizens Activities Club**

The Senior Citizens Activities Club which meets every Friday enjoyed many activities together. Tea dances were held throughout the year, a barbecue was held in the summer and an Octogenarian party was held for the birthday girls. Some of the outings were to Dail Eireann, the Over 50's Show in the RDS and a Christmas Show in Lucan



Over 50 Show RDS



Christmas Show in Lucan

#### **Pre and Post Natal Support Programme**

We worked with the Tolka Area Partnership to bring pre and postnatal supports to pregnant women and mothers with new babies

#### **Macro Men's Group**

Enjoyed visiting the Book of Kells Guinness Hop Store Botanic Gardens the Cinema Bowling along with indoor activities such as card games

#### **Historical Walk and Talk**

The Macro Community Resource centre hosted a reception after the historical walk and talk in the Stoneybatter and Markets area

#### **Arran Street Community Garden**

Macro Building Management along with Dublin City Council facilitated meetings to support the development of the Arran Street Community

#### **Macro Lego Club**

Our 3rd Lego Club ran for 6 weeks with 15 children attending and enjoying the Lego.

#### **Children's Easter Activities**

Our Easter Activities engaged children in games and art and craft activities for the week after Easter

#### **Macro Environmental Project and Plant Sale**

Our 3<sup>rd</sup> plant sale was held just before the June bank holiday plants were sold 50 free window boxes were given out to the local community to enhance the local area. Many people welcomed the colour



the plants brought to their street

### **Alzheimer's Tea-Day**

Our annual 5<sup>th</sup> Alzheimer's Tea day was held in May and was well supported by the local community and residents of the Community Resource Centre

### **Macro Art Competition**



***The Winners "Congratulations"***

### **Macro Summer Project**

A three week programme of activities for 12 years was held from the 7<sup>th</sup> July to the 24<sup>th</sup> attended by children. Our tutors Denise provided Story Telling Picnic, Games/Board Lego and Film Arts & Crafts/Drama Cookery Table Quiz and Bingo. The children came from Chancery House, Parnell Street, Constitution Kevin Barry House, Anne Street and other Children of all nationalities attended making it a



children aged 4 to July and was Jennifer and Jessica Games, Jigsaws,

St Michan's House, Hill, Jervis Place surrounding areas. multicultural event.



Our most successful events were the cookery and the barbecue where all the children made fruit smoothies with fresh fruit from the markets area cooked burgers and sausages decorated cup-cakes and tray bakes lots of photographs were taken for the children to take home and a great time was had by all. We would like to take this opportunity to thank all the parents who volunteered to help with the activities. The Summer Project was supported by the Macro Charity Shop and Dublin City Council

### **Children's Pre School Christmas Party with Santa**

In December we hosted our 10<sup>th</sup> annual Christmas pre-school Christmas party with a puppet show disco and Santa for over 70 local pre-school children A great time was had by all even the parents who enjoyed a welcome cup of tea



© BNP Design Studio \* [www.ClipartOf.com/1052251](http://www.ClipartOf.com/1052251)

### **12<sup>th</sup> Christmas Gathering**

Our last event for the year was our 12<sup>th</sup> Christmas Gathering which was opened by the Lord Mayor of Dublin Christy Burke. The gathering was held in our reception area with resident projects and the local community. Our Christmas carol service was performed this year by St Dominic's School Choir who sang beautifully. Refreshments were available for all.



## ***Finance Report***



<p style="text-align: center;">The Governance Code</p> <p style="text-align: center;">Macro Building Management Board Statement</p>
---

*"We comply with the Governance Code for community, voluntary and charitable organisations in Ireland. We confirm that a review of our organisation's compliance with the principles in the Code was conducted 21/05/2014. This review was based on an assessment of our organisational practice against the recommended actions for each principle. The review sets out actions and completion dates for any issues that the assessment identifies need to be addressed."*

**Macro Building Management Ltd**

(A Company Limited by Guarantee and not having a Share Capital)

Balance Sheet  
as at 31<sup>st</sup> December 2014

	2014		2013	
	€	€	€	€
Current assets				
Debtors	4,543		683	
Cash at bank and in hand	<u>241,811</u>		<u>230,611</u>	
	246,354		231,294	
Creditors: amounts falling due within one year	<u>(28,290)</u>		<u>(20,747)</u>	
Net current assets		<u>218,064</u>		<u>210,547</u>

Total assets less current		
Liabilities	222,605	210,547
Net assets	<u>222,605</u>	<u>210,547</u>
Reserves		
Other reserves	<u>222,605</u>	<u>210,547</u>
General Reserve	<u>222,605</u>	<u>210,547</u>

The financial statements were approved by the Board on 25<sup>th</sup> March 2015 and signed on its behalf by

May Burke  
Secretary

Joan McConvey  
Director

**MACRO Building Management Ltd**  
**(A company limited by guarantee not having a share capital)**  
**Income & Expenditure Account for the year ended 31 December 2014**

<u>Income</u>		
	<b>2014</b>	<b>2013</b>
	<b>€</b>	<b>€</b>
Contribution	83,393	76,804
Short-term Lettings	14,256	14,902
Pobal – Wages Grant	146,198	146,198
DCC License Fee	--	5,021
DCC Management Grant	95,000	110,000
Go For Life Grant	270	-
Community Activities	1,539	710
Charity Shop	28,045	26,726
Communication Services	2,987	3,350
Support Services	3,777	3,967
Catering	4,447	2,797
Waste Labels	835	502



Maintenance DCC		2,378
Miscellaneous Income	48	440
Deposit Interest Received	1,679	1,916
Macro Men's Group	450	500
DCC Summer Activities Grant	1,890	803
Senior Citizens Activities Club	2,060	-
Department of Social Welfare	-	282

<b>Total Income</b>	<b>386,874</b>	<b>397,446</b>
---------------------	----------------	----------------

#### Expenditure

Wages and Salaries	218,830	224,048
Er prsi contributions	22,301	20,396
Charity Shop	415	411
Rates	7,778	9,453
Service & Maintenance Charges	32,057	39,383
Insurance	2,963	3,003
Light and Heat	32,932	34,358
Janitorial	2,306	2,100
Equipment & fixtures	2,024	2,187
Office expenses	6,974	9,533
Publicity	-----	923
Telephone and Fax	5,968	6,338
IT Maintenance & restructuring	4,463	4,341
Catering	2,781	2,351
Waste Management	1,334	1,676
Men's Group	363	369
Community Activities	6,075	4,240
Policy Development	2,491	--
Property License	3,240	3,240
Audit	3,075	3,075
Bank Charges	717	612
Vat Refunds to Projects	---	442

Sinking Fund	10,000 `	10,000
COMMUNITY Shared Funding	2,712	2,712
Volunteer Expenses	2,704	--
Training	891	--
Depreciation of Fixtures, Fittings and Equipment	446 -	--
Depreciation on Computer Equipment	633	--

<b>Total Expenditure</b>	<b>374,816</b>	<b>385,191</b>
--------------------------	----------------	----------------

## **ACKNOWLEDGEMENTS**

This year as in the past Macro Building Management wishes to acknowledge the support given by many agencies projects and individuals.

Our gratitude is expressed to

DEPT OF SOCIAL PROTECTION for part funding the staff of the Resource Centre under the Community Services Programme administered by POBAL.

DUBLIN CITY COUNCIL Advisors, Marion Finglas, and Niall Byrne Eamon Duffy and the Development Department of Dublin City Council for part funding for staff and maintenance and providing a support service to the Resource Centre.

### **ADVISORS TO THE BOARD**

John Farrell

The focused ethos of Macro Building Management is the inclusion of the community of the Markets Area in their availing of the services provided in the resource centre. In this regard we acknowledge the time and energy given by projects through their staff and voluntary Management Boards. Projects commitment to the service for the community is vital and for this we acknowledge their commitment.

Projects

GEORGE'S HILL COMMUNITY EMPLOYMENT PROJECT  
CITY NORTH WEST CITIZEN'S INFORMATION SERVICE  
MACRO SENIOR CITIZENS SERVICE

NWIC TRAINING & DEVELOPMENT PROJECT  
 PITTER PATTEN CRECHE  
 THE SNUG COUNSELLING SERVICE  
 IRISH ENVIRONMENTAL NETWORK  
 NATIONAL ADVOCACY SERVICE  
 EUROPEAN CONSUMERS CENTRE  
 IRISH PENAL REFORM TRUST

The Board of Management wishes to express our warmest thanks to all our staff for all of the hard work and outstanding contributions given. The time and energy is deeply appreciated of all our staff in making the Resource Centre the success it is today. We know we can count on our staff to go that extra mile. Thank you again.

***Building Management Staff***

Brenda Murphy	Development Manager`	Patricia Trumble	Assistant Manager
Mary Hynes	Anne Mackey	Denise Towell	David Crowley
Jason Kearns	Christopher Bardon	Carol Dodrill	Carol Rollo
Caroline Kenny	Melissa Dodrill		

***Parish Employment Network***

Eileen Cahill

***Jobbridge***

Craig O'Beirne and John Dunne

***TUS participants***

Terence Fagan Paul Ivory and John Hart

***Charity Shop Volunteers***

Craig O'Beirne, Dominic O'Neill, Joan McConvey, Annette Darcy

***Senior Citizens Club Volunteers***

Sylvia Lynam, Tina Lambe, Margaret Taaffe, May Burke, Liz Kavanagh and Maura Ellis